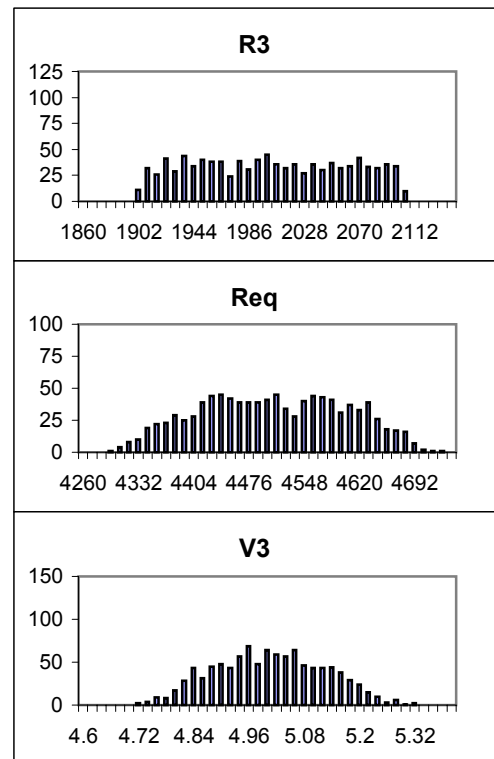


1) $Req = R1 + (R2 || R3) = R1 + (R2 * R3)/(R2 + R3)$
 $V3 = 15.0v (1 - R1/Req)$

	R1	R2	R3	Worst Case	
				Req	V3
NOMINAL	3000	6000	2000	4500	5.000
MIN	2850	5700	1900	4275	4.672
MAX	3150	6300	2100	4725	5.339
MIN (%)				-5.00%	-6.56%
MAX (%)				5.00%	6.78%
	2850	5700	1900	4275	5.000
	2850	5700	2100	4385	5.250
	2850	6300	1900	4310	5.081
	2850	6300	2100	4425	5.339
	3150	5700	1900	4575	4.672
	3150	5700	2100	4685	4.914
	3150	6300	1900	4610	4.750
	3150	6300	2100	4725	5.000

2)

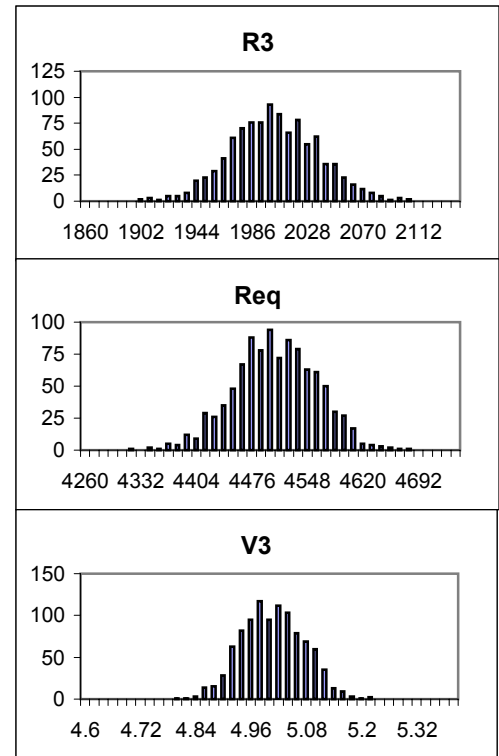
	Uniform Distribution (1000 trials)				
	R1	R2	R3	Req	V3
AVG	3002.89	5994.46	1999.72	4501.95	4.996
MIN	2850.26	5701.59	1900.26	4293.06	4.707
MAX	3149.76	6299.89	2099.79	4716.33	5.317
STDEV	85.81	168.46	57.46	94.38	0.118
Trial #1	2941.29	6064.85	1953.89	4419.08	5.016
	2944.57	5802.03	1939.50	4398.16	4.957
	3058.04	6225.62	2040.76	4594.99	5.017
	2969.72	5993.57	1982.71	4459.58	5.011
	3101.04	6033.80	1906.13	4549.57	4.776
	2861.31	6002.67	1991.76	4356.84	5.149
	3130.61	5986.96	1962.17	4608.44	4.810
	3125.98	6222.21	2085.13	4687.74	4.997
	3086.87	6040.34	1908.77	4537.30	4.795
Trial #10	3115.70	5997.27	2098.82	4670.43	4.993



NOTE: Plots for R1 and R2 are similar in shape to the plot for R3.

3)

Normal Distribution (1000 trials)					
	R1	R2	R3	Req	V3
AVG	3001.43	5996.82	2000.02	4501.10	4.998
MIN	2843.37	5721.15	1899.51	4313.13	4.799
MAX	3157.72	6356.02	2102.61	4672.36	5.217
STDEV	48.77	95.64	33.03	53.93	0.067
Trial #1	2974.39	6027.43	1979.52	4464.53	5.007
	2975.95	5904.60	1971.65	4454.03	4.978
	3025.29	6115.54	2017.85	4542.52	5.010
	2987.21	5997.31	1992.72	4482.95	5.005
	3049.07	6014.17	1937.61	4514.55	4.869
	2911.10	6001.12	1996.55	4409.23	5.097
	3075.85	5994.55	1983.55	4566.24	4.896
	3070.23	6112.81	2048.13	4604.35	4.998
	3040.25	6016.93	1943.08	4509.01	4.886
Trial #10	3060.19	5998.86	2083.93	4606.84	5.036



4)

Binned Normal Distribution (1000 trials)					
	R1	R2	R3	Req	V3
AVG	2999.31	6008.10	2000.29	4499.73	5.002
MIN	2846.43	5679.52	1880.26	4334.93	4.707
MAX	3168.67	6316.69	2130.93	4687.84	5.257
STDEV	65.89	129.55	43.62	71.92	0.091
Trial #1	3037.80	5890.25	1978.53	4518.85	4.916
	3040.48	5860.00	1961.46	4510.05	4.888
	2933.77	5913.36	1976.96	4415.39	5.033
	2943.66	5913.59	2021.92	4450.40	5.078
	2878.73	5903.64	1966.11	4353.64	5.082
	3044.13	5853.01	1969.32	4517.66	4.893
	2951.48	6176.89	1962.39	4440.74	5.030
	3125.04	6113.11	2024.64	4645.96	4.910
	3106.01	5935.41	2055.70	4632.88	4.944
Trial #10	3079.91	6087.67	1960.92	4563.08	4.876

