

ECE 4391 Electromagnetic Compatibility Quiz 1

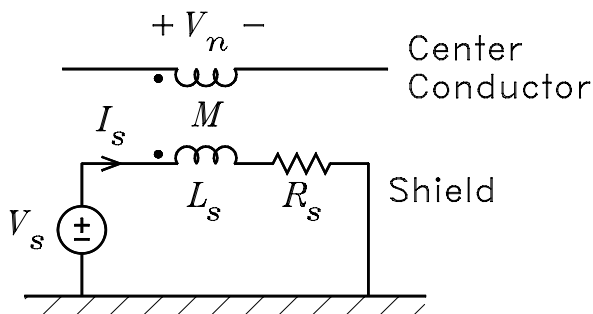
June 3, 2002

Professor Leach

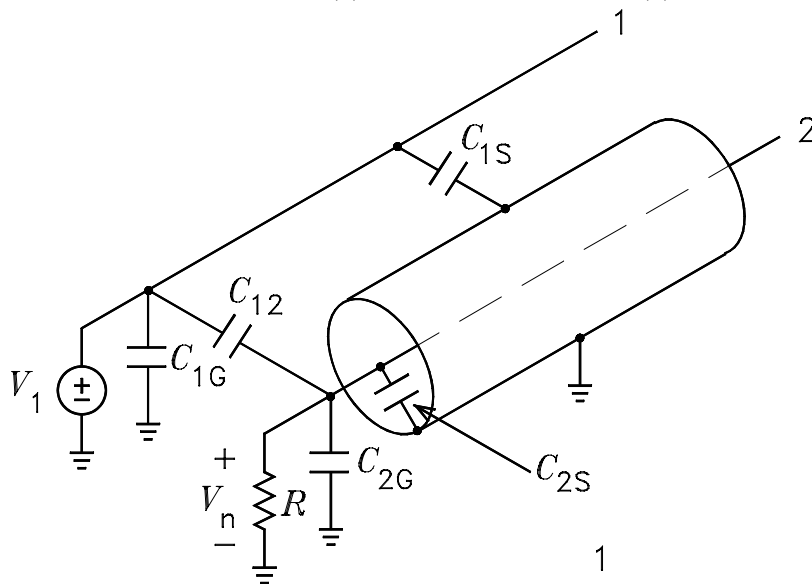
Name _____

Instructions. *Problem 3 is on the back of this page.* Print your name in the space above and at the top of all other pages in your quiz. Be brief with your answers. Draw simple diagrams that illustrate your answers. The quiz is closed notes and closed calculator. **Honor Code Statements:** *I have neither given nor received help on this quiz.* Initials _____

- The figure shows the equivalent circuit of a shielded conductor. The source V_s represents a noise voltage that is induced on the shield. (a) Derive the expressions for the shield current I_s and the noise voltage V_n coupled into the conductor as a function of $j\omega$. (b) Sketch the Bode magnitude plot for V_n/V_s . Label and give the equation for the shield cutoff frequency f_c . (c) If the shield noise voltage is due to an external magnetic field, what is the primary method of reducing the coupling?



- In the figure, V_1 is a noise voltage on conductor 1. Conductor 2 is shielded and extends beyond the shield. The voltage V_n is the noise voltage coupled into conductor 2 from conductor 1. The parasitic capacitors between the conductors are labeled. (a) Draw the equivalent circuit and derive the transfer function for V_n/V_1 . (b) Sketch the Bode magnitude plot for V_n/V_1 . (c) What methods might be used to reduce the noise coupling (1) at low frequencies and (2) at high frequencies?



- What are the three primary means of noise coupling?
 - Describe two problems that can occur when different metals are in contact with each other.
 - A noise voltage is induced in a signal lead between a source and a load. Describe a simple experiment that can be used to determine if the noise voltage is coupled through an electric field or a magnetic field.